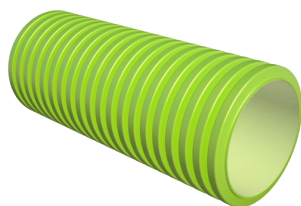




LINEA VENTILAZIONE INDICE

VENTILATION LINE INDEX



SISTEMA TUBI FLESSIBILI IN ALLUMINIO <i>ALUMINUM FLEXIBLE PIPES SYSTEM</i>	Ø60 — Ø300	<i>Pag.</i> 104
BOX DI DISTRIBUZIONE UNIVERSALI <i>UNIVERSAL DISTRIBUTION BOXES</i>	Ø75 — Ø90	107
SISTEMA DI DISTRUBUZIONE CIRCOLARE <i>CIRCULAR DISTRIBUTION SYSTEM</i>	Ø75 — Ø90	108
SISTEMA DI DISTRUBUZIONE OVALE <i>OVAL DISTRIBUTION SYSTEM</i>	50x140mm	109
DIFFUSORI <i>DIFFUSER</i>		110
SISTEMI AERAULICI COIBENTATI IN EPE <i>EPE INSULATED AERAULIC SYSTEMS</i>	Ø125 — Ø200	112
KIT PER SCALDACQUA TERMODINAMICO <i>KIT FOR THERMODYNAMIC BOILER</i>	Ø160 — Ø180	113
SISTEMI TERMINALI ISOLATI PER TETTO A PARETE <i>INSULATED TERMINALS FOR ROOF WALL SYSTEMS</i>	Ø125 — Ø200	114
TERMINALI A TETTO PER SISTEMI IBRIDI <i>ROOF TERMINALS FOR HYBRID SYSTEMS</i>	Ø125 — Ø250	115
SISTEMA VMC PUNTUALE <i>SPOT VENTILATION SYSTEM</i>		116

La “**LINEA VENTILAZIONE**” è un sistema di distribuzione dell’aria all’interno di un edificio, che ne garantisce il ricambio con l’ambiente naturale esterno ed il trattamento. Dopo l’estrazione forzata di quella viziata presente negli ambienti interni, l’aria, prelevata esternamente, verrà reintrodotta in edificio opportunamente filtrata e climatizzata.

*The “**VENTILATION LINE**” is an air distribution system inside a building, which guarantees its exchange with the external natural environment and treatment. After the forced extraction of the stale air present in the internal environment, the air, taken from the external natural environment, will be reintroduced into the building appropriately filtered and air-conditioned.*



Scarica le certificazioni dal nostro sito
Download the certifications on our website

CAMPO DI UTILIZZO: I Prodotti della “LINEA VENTILAZIONE” sono progettati per essere impiegati al servizio di sistemi di condizionamento.

INSTALLAZIONE:

Prima di iniziare l’installazione di qualsiasi componente, assicurarsi che la designazione del prodotto, riportata sul pezzo sia idonea all’installazione da effettuare.

Installare i componenti secondo le indicazioni dettate dal costruttore dell’apparecchio.

Verificare l’integrità e la pulizia dei giunti degli elementi da installare: Elementi con giunti danneggiati (es. schiacciati, ovalizzati ecc.) non possono essere utilizzati

Se l’installazione dei condotti avviene in prossimità di materiali combustibili, rispettare le distanze minime specificate nella designazione del prodotto (*Le norme nazionali di installazione possono prescrivere una distanza superiore al valore indicato*).

Terminata l’installazione del sistema, effettuare un controllo secondo le normative vigenti.

MANUTENZIONE

Per un buon funzionamento e mantenimento dell’impianto, effettuare scrupolosamente le operazioni contenute in questo paragrafo. Tali operazioni possono essere effettuate esclusivamente da personale qualificato, utilizzando idonee attrezzature, nel rispetto delle disposizioni legislative e regolamentari in materia di tutela della sicurezza e salute dei lavoratori negli ambienti di lavoro.

Eseguire una manutenzione programmata, con frequenza consigliata di 1 volta l’anno, salvo diversa specifica dettata da Leggi/Norme vigenti o dal costruttore dell’apparecchio.

Effettuare la pulizia dei condotti e verificare che il sistema di scarico garantisca un corretto deflusso dell’aria. La pulizia deve essere effettuata con adeguate attrezzature quali ad esempio: spugna, spazzola in plastica ecc. .

Effettuare una verifica dello stato e della tenuta degli Elastomeri/Guarnizioni e provvedere a sostituirli nel caso risultassero deteriorati.

FIELD OF USE: The “VENTILATION LINE” products are designed to be used in the service of air conditioning systems.

INSTALLATION:

Before starting the installation of any component, make sure that the product designation, shown on the piece, is suitable for the installation to be carried out.

Install the components according to the instructions given by the appliance manufacturer.

Check the integrity and cleanliness of the joints of the elements to be installed: Elements with damaged joints (e.g. crushed, ovalized, etc.) cannot be used.

If the installation of the ducts takes place near combustible materials, respect the minimum distances specified in the product designation (*National installation standards may prescribe a distance greater than the indicated value*).

Once the system has been installed, carry out a check according to the regulations in force.

MAINTENANCE

For good operation and maintenance of the system, scrupulously carry out the operations contained in this paragraph. These operations may only be carried out by qualified personnel, using suitable equipment, in compliance with the legislative and regulatory provisions regarding the protection of the health and safety of workers in the workplace.

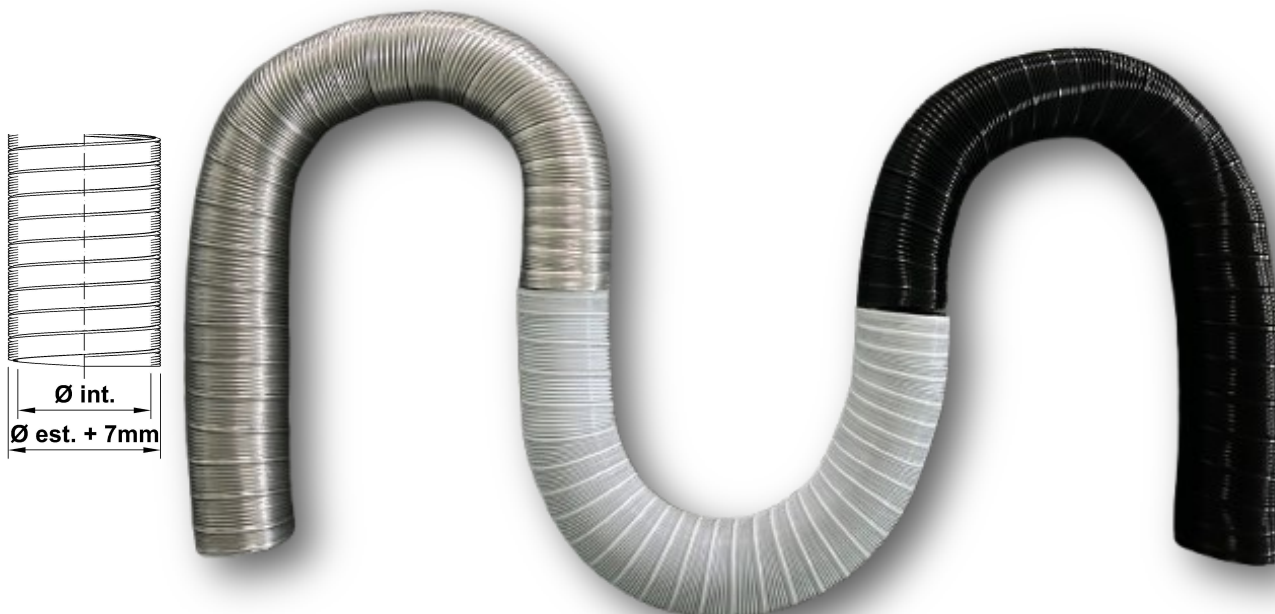
Perform scheduled maintenance, with a recommended frequency of once a year, unless otherwise specified by current Laws/Regulations or by the manufacturer of the appliance.

Clean the ducts and check that the exhaust system guarantees correct air flow. Cleaning must be carried out with suitable equipment such as: sponge, plastic brush, etc.

Check the condition and seal of the Elastomers/Gaskets and replace them if they are damaged.


TUBO IN ALLUMINIO Sp.0,12 FLESSIBILE ESTENSIBILE
NATURAL ALUMINUM THK. 0,12 FLEXIBLE EXTENSIBLE

Ø int.	NATURALE NATURAL		BIANCO WHITE		NERO BLACK		📦
	CODE	€/Pcs	CODE	€/Pcs	CODE	€/Pcs	
60	10715060	07,86	10715060B	10,94	10715060VN	10,94	01
70	10715070	09,05	10715070B	12,60	10715070VN	12,60	01
80	10715080	10,28	10715080B	14,31	10715080VN	14,31	01
90	10715090	11,40	10715090B	15,86	10715090VN	15,86	01
100	10715100	12,54	10715100B	17,46	10715100VN	17,46	01
110	10715110	13,68	10715110B	19,05	10715110VN	19,05	01
120	10715120	14,88	10715120B	20,72	10715120VN	20,72	01
125	10715125	15,56	10715125B	21,65	10715125VN	21,65	01
130	10715130	16,05	10715130B	22,34	10715130VN	22,34	01
135	10715135	16,42	10715135B	22,85	10715135VN	22,85	01
140	10715140	17,31	10715140B	24,09	10715140VN	24,09	01
145	10715145	17,92	10715145B	24,94	10715145VN	24,94	01
150	10715150	18,58	10715150B	25,87	10715150VN	25,87	01
160	10715160	19,80	10715160B	27,56	10715160VN	27,56	01
170	10715170	20,84	10715170B	29,00	10715170VN	29,00	01
180	10715180	21,99	10715180B	30,61	10715180VN	30,61	01
200	10715200	24,60	10715200B	34,24	10715200VN	34,24	01
220	10715220	27,28	10715220B	37,99	10715220VN	37,99	01
230	10715230	27,82	10715230B	38,72	10715230VN	38,72	01
240	10715240	29,79	10715240B	41,47	10715240VN	41,47	01
250	10715250	30,20	10715250B	42,04	10715250VN	42,04	01
280	10715280	33,95	10715280B	47,26	10715280VN	47,26	01
300	10715300	36,22	10715300B	50,41	10715300VN	50,41	01





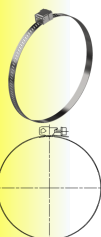
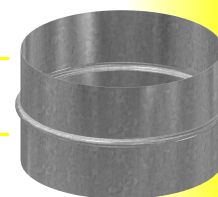
NASTRO IN ALLUMINIO ADESIVO
ALUMINUM FOIL TAPE

L	CODE	€/Pcs	
5 m	NAA100	41,27	01


Larghezza 100mm
100mm width

MANICOTTI DI GIUNZIONE
IN ACCIAIO ZINCATO Sp.0,5
GALVANIZED STEEL THK. 0,5 CONNECTING SLEEVES

Ø	CODE	€/Pcs	
60	MAZ060	04,71	01
70	MAZ070	04,86	01
80	MAZ080	05,13	01
90	MAZ090	05,32	01
100	MAZ100	05,40	01
110	MAZ110	06,00	01
120	MAZ120	06,80	01
125	MAZ125	06,96	01
130	MAZ130	07,14	01
135	MAZ135	07,25	01
140	MAZ140	07,48	01
145	MAZ145	08,09	01
150	MAZ150	08,69	01
160	MAZ160	09,47	01
170	MAZ170	10,61	01
180	MAZ180	11,82	01
200	MAZ200	13,12	01
220	MAZ220	14,36	01
230	MAZ230	16,53	01
240	MAZ240	16,78	01
250	MAZ250	18,27	01
280	MAZ280	20,70	01
300	MAZ300	21,92	01




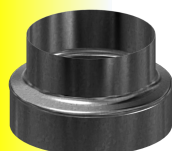
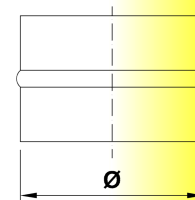
FASCETTE DI FISSAGGIO
REGOLABILI IN ACCIAIO INOX
STAINLESS STEEL ADJUSTABLE FIXING CLAMPS

Ø	CODE	€/Pcs	
60 - 215	FI60215	03,65	01
60 - 325	FI60325	04,86	01




RIDUZIONE IN PP
PP ADAPTER

Ø	CODE	€/Pcs	
160 - 80	RID16080B	09,90	06



RIDUZIONE IN METALLO
METAL ADAPTER

Ø	CODE	€/Pcs	
160 - 200	RZ1620F	24,90	01

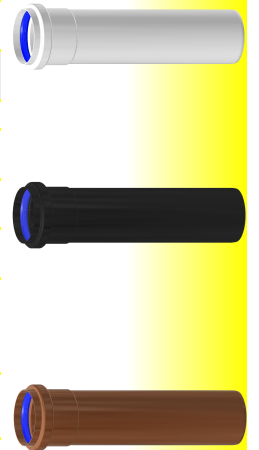
CURVA M/F ALLUMINIO PRESSOFUSO
M/F BENDS DIE CAST ALUMINIUM



Ø	CODE	€/Pcs	
60	90° CAP9006B2 (BIANCO - WHITE)	17,15	02
60	45° CAP4506B2 (BIANCO - WHITE)	16,13	02
60	90° CAP9006VN (NERO - BLACK)	17,15	02
60	45° CAP4506VN (NERO - BLACK)	16,13	02
60	90° CAP9006VR (VERNICIATO RAME - COPPER PAINTED)	18,71	02
60	45° CAP4506VR (VERNICIATO RAME - COPPER PAINTED)	17,59	02

TUBI M/F ALLUMINIO ESTRUSO Sp. 1
M/F PIPES EXTRUDED ALUMINIUM THK.1

Ø	L	CODE	€/Pcs	
60	1000	TA061MFB2 (BIANCO - WHITE)	16,49	02
60	500	TA065MFB2 (BIANCO - WHITE)	12,31	02
60	250	TA062MFB (BIANCO - WHITE)	08,33	02
60	1000	TA061MFVN (NERO - BLACK)	16,49	02
60	500	TA065MFVN (NERO - BLACK)	12,30	02
60	250	TA062MFVN (NERO - BLACK)	09,16	02
60	1000	TA061MFVR (VERNICIATO RAME - COPPER PAINTED)	17,99	02
60	500	TA065MFVR (VERNICIATO RAME - COPPER PAINTED)	13,42	02
60	250	TA062MFVR (VERNICIATO RAME - COPPER PAINTED)	09,99	02



ROSONI COPRIMURO
WALL COVERS



Ø	CODE	€/Pcs	
60	RCEP06 (BIANCO - WHITE)	03,24	20
60	RCEP06M (MARRONE - BROWN)	03,57	20
60	PRCS60N (NERO - BLACK)	03,84	10

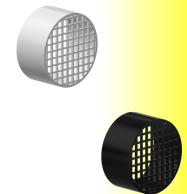
EPDM EPDM

SILICONE SILICON

TERMINALI ORIZZONTALI
ASPIRAZIONE ARIA
AIR INLET HORIZONTAL TERMINALS

Ø	CODE	€/Pcs	
60	TERM06P (BIANCO - WHITE)	03,36	10
60	TERM06PN (NERO - BLACK)	03,36	10

Polipropilene Polypropylene



COLLARI
WALL BRACKETS



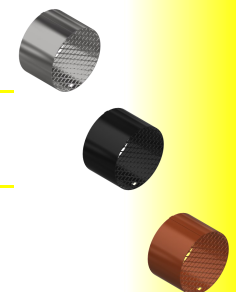
Ø	CODE	€/Pcs	
60	COFERB06 (BIANCO - WHITE)	04,44	25
60	COFERB06VN (NERO - BLACK)	04,88	10
60	COFERB06VR (VERNICIATO RAME - COPPER PAINTED)	05,36	10

Acciaio - Lunghezza gambo 200mm
Steel - Anchor length 200mm

TERMINALI ORIZZONTALI
ASPIRAZIONE ARIA
AIR INLET HORIZONTAL TERMINALS

Ø	CODE	€/Pcs	
60	TERMA06I	05,74	10
60	TERMA06IVN (NERO - BLACK)	07,20	10
60	TERMA06IVR (VERNICIATO RAME - COPPER PAINTED)	07,40	10

Acciaio Inox AISI 304 Stainless Steel AISI 304





BOX DI DISTRIBUZIONE
ATTACCO VERTICALE
DISTRIBUTION BOX VERTICAL CONNECTION

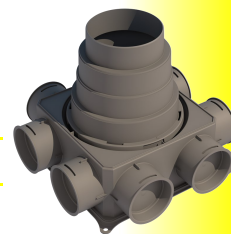
CODE	€/Pcs	
BOX6VE125180	126,90	01

6 Connessioni Ø125, Ø150, Ø160 e Ø180
6 Connections Ø125, Ø150, Ø160 and Ø180

BOX DI DISTRIBUZIONE
ATTACCO VERTICALE
DISTRIBUTION BOX VERTICAL CONNECTION

CODE	€/Pcs	
BOX8VE125180	182,34	01

8 Connessioni Ø125, Ø150, Ø160 e Ø180
8 Connections Ø125, Ø150, Ø160 and Ø180



BOX DI DISTRIBUZIONE
ATTACCO VERTICALE
DISTRIBUTION BOX VERTICAL CONNECTION

CODE	€/Pcs	
BOX12VE128180	295,38	01

12 Connessioni Ø125, Ø150, Ø160 e Ø180
12 Connections Ø125, Ø150, Ø160 and Ø180

BOX DI DISTRIBUZIONE
ATTACCO ORIZZONTALE
DISTRIBUTION BOX HORIZONTAL CONNECTION

CODE	€/Pcs	
BOX6OR125	171,58	01

6 Connessioni Ø125
6 Connections Ø125



BOX DI DISTRIBUZIONE
ATTACCO VERTICALE
DISTRIBUTION BOX VERTICAL CONNECTION

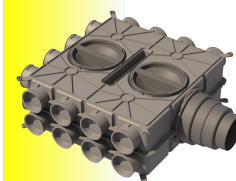
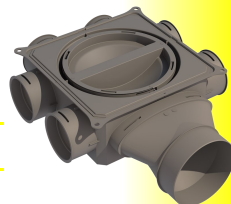
CODE	€/Pcs	
BOX8VE100125	182,34	01

8 Connessioni Ø100/125
8 Connections Ø100/125

BOX DI DISTRIBUZIONE
ATTACCO ORIZZONTALE
DISTRIBUTION BOX HORIZONTAL CONNECTION

CODE	€/Pcs	
BOX6OR160	146,52	01

6 Connessioni Ø160
6 Connections Ø160



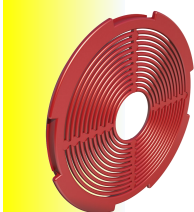
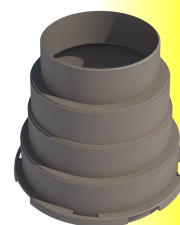
BOX DI DISTRIBUZIONE
ATTACCO ORIZZONTALE
DISTRIBUTION BOX HORIZONTAL CONNECTION

CODE	€/Pcs	
BOX24OR125180	292,86	01

24 Connessioni Ø125/180
20 Connections Ø125/180

CONNETTORE PER BOX Ø125/160
BOX CONNECTOR Ø125/160

CODE	€/Pcs	
CONN1251280	22,43	01

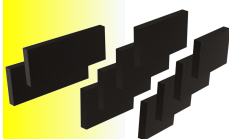


REGOLATORE DI PORTATA
STATICO PER BOX
STATIC FLOW REGULATOR FOR BOX

CODE	€/Pcs	
REGPS	2,59	10

CONNETTORE PER BOX
BOX CONNECTOR

Ø	CODE	€/Pcs	
200	CONN200	57,24	01



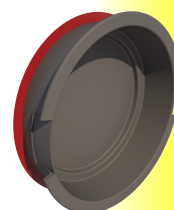
ATTENUATORE ACUSTICO
ADDIZIONALE PER BOX
ADDITIONAL ACOUSTIC ATTENUATOR
FOR BOXE

CODE	€/Pcs	
KITAA	79,20	01

•Classe di assorbimento acustico "A" EN 354:2003 •Dimensionalmente stabile ed elastico
•Ipoallergenico •Resistente ai parassiti
•Resistente a umidità e vibrazioni
•Sound absorption class "A" EN 354:2003 •Dimensionally stable and elastic •Hypoallergenic •Pest resistant
•Moisture and vibration resistant

TAPPO PER BOX DISTRIBUZIONE
CAP FOR DISTRIBUTION BOX

CODE	€/Pcs	
TAPPOBOX	2,66	01



SISTEMA DI DISTRIBUZIONE CIRCOLARE

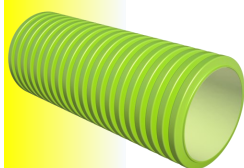
CIRCULAR DISTRIBUTION SYSTEM

LINEA VENTILAZIONE
VENTILATION LINE



Ø63/75 Capacità di ventilazione a 3m/s: 34m³/h
Ventilation capacity

Ø75/90 Capacità di ventilazione a 3m/s: 48m³/h
Ventilation capacity

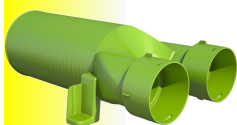


CONDOTTO FLESSIBILE ANTISTATICO ANTISTATIC FLEXIBLE DUCT

Ø	L	CODE	€/Pcs	
75	50 m	TFLPP75V	05,61/m	01
90	50 m	TFLPP90V	06,15/m	01

ADATTATORE VALVOLA 90° 90° VALVE ADAPTER

Ø	CODE	€/Pcs	
75	ADAVAL9075	72,36	01
90	ADAVAL9090	73,36	01

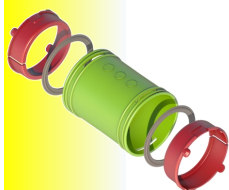


ADATTATORE VALVOLA 180° 180° VALVE ADAPTER

Ø	CODE	€/Pcs	
75	ADAVAL18075	83,92	01

ADATTATORE GRIGLIA 90° 90° GRID ADAPTER

Ø	CODE	€/Pcs	
75	ADAGRI9075	98,57	01

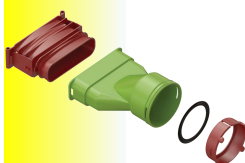


KIT GIUNZIONE CONDOTTO DUCT JOINT KIT

Ø	CODE	€/Pcs	
75	KITGCPP75V	10,35	01
90	KITGCPP90V	18,76	01

KIT CURVA 90° 90° BEND KIT

Ø	CODE	€/Pcs	
75	KITCPP9075V	13,64	01
90	KITCPP9090V	24,14	01



KIT CONVERTITORE 180° 180° CONVERTER KIT

Ø	CODE	€/Pcs	
90	KITCONV180	49,93	01

CONVERTITORE DI PASSAGGIO PASSAGE CONVERTER

Ø	CODE	€/Pcs	
90	CONVPAS90	93,24	01

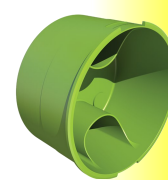


KIT COLLEGAMENTO CONDOTTO DUCT CONNECTION KIT

Ø	CODE	€/Pcs	
75	KITCOL75	14,65	01
90	KITCOL90	46,62	01

TAPPO CAP

Ø	CODE	€/Pcs	
75	TAPPO34	05,90	01
90	TAPPO48	12,78	01

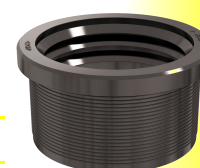


REGOLATORE DI PORTATA FLOW REGULATOR

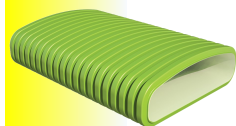
Ø	CODE	€/Pcs	
75	REGPORTE	24,73	01

ATTACCO PER CURVA A BOX CONNECTION FOR BOX BAND


Ø	CODE	€/Pcs	
90	ATTGB	16,02	01




50x140mm Capacità di ventilazione a 3m/s: 47m³/h
Ventilation capacity



CONDOTTO FLESSIBILE ANTISTATICO
ANTISTATIC FLEXIBLE DUCT


Dim.	L	CODE	€/Pcs	
50x140	20 m	TFLSO50140	19,99/m	01

KIT CURVA 90°
90° BEND KIT


Dim.	CODE	€/Pcs	
50x140	KITCO90	34,31	01

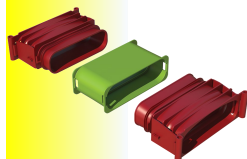


ADATTATORE VALVOLA 90°
90° VALVE ADAPTER


Dim.	CODE	€/Pcs	
50x140	ADAVL90125	31,75	01

ADATTATORE GRIGLIA 90°
90° GRID ADAPTER


Dim.	CODE	€/Pcs	
50x140	ADAGR90	102,53	01

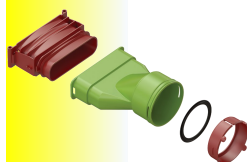


KIT GIUNZIONE CONDOTTO
DUCT JOINT KIT


Dim.	CODE	€/Pcs	
50x140	KITGC50140	29,05	01

KIT CURVA VERTICALE 90°
90° VERTICAL BEND KIT


Dim.	CODE	€/Pcs	
50x140	KITCV90	33,52	01

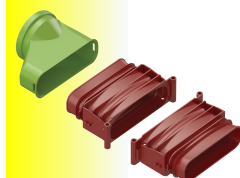
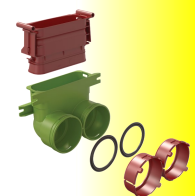


KIT CONVERTITORE 180°
180° CONVERTER KIT


Dim.	CODE	€/Pcs	
50x140	KITCONV180	49,93	01

KIT CONVERTITORE 90°
90° CONVERTER KIT


Dim.	CODE	€/Pcs	
50x140	KITCONV90	35,53	01



KIT COLLEGAMENTO CONDOTTO
DUCT CONNECTION KIT

Dim.	CODE	€/Pcs	
50x140	KITCOL50140	58,79	01

TAPPO
CAP

Dim.	CODE	€/Pcs	
50x140	TAPPO45	07,24	01





VALVOLA HAELIX ROTONDO Ø125
HAELIX ROUND VALVE Ø125

Ø	CODE	€/Pcs	
125	VR125	44,92	01

Est. Ø228

VALVOLA HAELIX QUADRATO Ø125
HAELIX SQUARE VALVE Ø125

Ø	CODE	€/Pcs	
125	VQ125	45,34	01

Dim. Est. 230x230



VALVOLA DI ESTRAZIONE Ø125
ABS Bianco
EXTRACTION VALVE ABS White Ø125

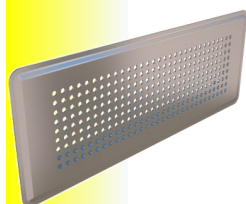
Ø	CODE	€/Pcs	
125	VEB125	18,57	01

Est. Ø158

VALVOLA DI IMMISSIONE Ø125
ABS Bianco
INLET VALVE ABS White Ø125

Ø	CODE	€/Pcs	
125	VIM125	18,57	01

Est. Ø158




GRIGLIA CALPESTABILE
INOX
STAINLESS STEEL
WALKABLE GRID

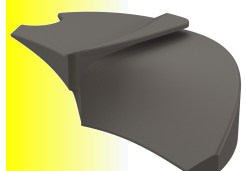
CODE	€/Pcs	
GCI3513	127,87	01

Dim. Est. 350x130


GRIGLIA CALPESTABILE INOX
VERNICIATO RAL9010
WALKABLE GRID IN STAINLESS STEEL PAINTED
RAL 9010

CODE	€/Pcs	
GCI3513	130,58	01

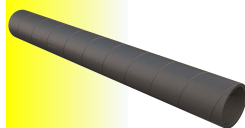
Dim. Est. 350x130





INSERTO DI CHIUSURA PER SETTORE
VALVOLA

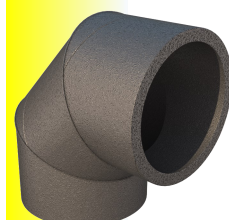
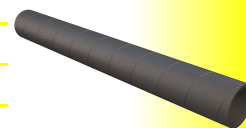
CODE	€/Pcs	
INSCHVAL	33,59	01


OTTIMIZZA LA DISTRIBUZIONE DELL'ARIA IN
AMBIENTE
INTEGRATO ALL'INTERNO DELLA VALVOLA NON È
VISIBILE DALL'ESTERNO
OPTIMIZES THE DISTRIBUTION OF AIR IN THE
ENVIRONMENT
INTEGRATED INSIDE THE VALVE IT IS NOT VISIBLE FROM
THE OUTSIDE




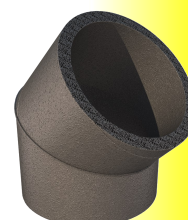
CONDOTTO L=1000		DUCT L=1000	
Ø	CODE	€/Pcs	
125	TCC1251000	33,60	01
160	TCC1601000	40,88	01
180	TCC1801000	54,31	01
200	TCC2001000	72,29	01


CONDOTTO L=2000		DUCT L=2000	
Ø	CODE	€/Pcs	
125	TCC1252000	56,45	08
160	TCC1602000	69,58	06
180	TCC1802000	94,94	04
200	TCC2002000	129,35	03




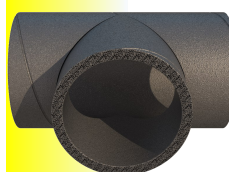
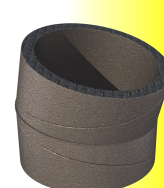
CURVA 90°		BEND 90°	
Ø	CODE	€/Pcs	
125	CCC12590	15,99	08
160	CCC16090	18,10	08
180	CCC18090	26,99	08
200	CCC20090	35,41	06


CURVA 45°		BEND 45°	
Ø	CODE	€/Pcs	
125	CCC12545	11,16	08
160	CCC16045	13,24	08
180	CCC18045	16,28	08
200	CCC20045	23,52	06



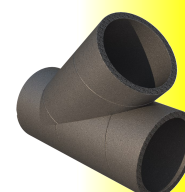
CURVA 30°		BEND 30°	
Ø	CODE	€/Pcs	
160	CCC16030	23,33	01
180	CCC18030	29,81	01

CURVA 15°		BEND 15°	
Ø	CODE	€/Pcs	
160	CCC16015	22,43	01
180	CCC18015	27,14	01



TEE 90°		TEE 90°	
Ø	CODE	€/Pcs	
125	TEECC12590	49,46	01
160	TEECC16090	53,96	01

TEE A Y 45°		Y TEE 45°	
Ø	CODE	€/Pcs	
180	Y18045	175,50	01



- ELEVATA CAPACITÀ DI ISOLAMENTO / ASSENZA DI CONDENSA
- NESSUNA OSSIDAZIONE
- NON INFIAMMABILE, CONFORME ALLA NORMA DIN 4102-B1
- MATERIALE SILENZIOSO E LEGGERO
- MATERIALE IMPERMEABILE

- HIGH INSULATION CAPACITY / NO CONDENSATION
- NO OXIDATION
- NOT FLAMMABLE, COMPLIANT WITH DIN 4102-B1 STANDARD
- SILENT AND LIGHTWEIGHT MATERIAL
- WATERPROOF MATERIAL



AERFOAM GIUNTO A CLIP
AERFOAM CLIP JOINT

Ø	CODE	€/Pcs	
125	CLIP125	8,64	16
160	CLIP160	9,58	12
180	CLIP180	10,69	16
200	CLIP200	12,21	12

RIDUZIONI
ADAPTER

Ø	CODE	€/Pcs	
125/160	RID125160N	28,87	01
125/180	RID125180N	28,88	01
160/180	RID160180N	29,18	01
180/200	RID180200N	31,32	01

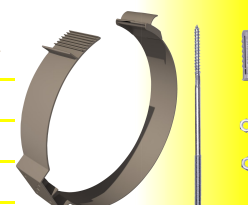


AERFOAM COLLARE DI FISSAGGIO
AERFOAM CLIP JOINT

Ø	CODE	€/Pcs	
125	COLLAREFISS125	10,08	01
160/ 200	COLLAREFISS161820	10,08	01

COLLARI
WALL BRACKETS

Ø	CODE	€/Pcs	
125	COLLARE125	16,24	01
160	COLLARE160	19,39	01
180	COLLARE180	21,20	01
200	COLLARE200	24,55	01



SILENZIATORE M/M SP. 50mm
SILENCER M/M THICKNESS 50mm

Ø	L	CODE	€/Pcs	
125	1000	SILMM1251000	64,80	01
160	1000	SILMM1601000	82,80	01
180	1500	SILMM1801500	97,20	01
200	1500	SILMM2001500	144,00	01

CONNETTORE PER BOX
BOX CONNECTION

Ø	CODE	€/Pcs	
200	CONN200	54,72	01



TERMINALE A PARETE INOX
STAINLESS STEEL WALL TERMINAL

Ø	CODE	€/Pcs	
125	TERMPAI125	122,29	01
160	TERMPAI160	132,08	01
180	TERMPAI180	207,90	01
200	TERMPAI200	265,79	01

MANICOTTO DI TENUTA
UNIVERSALE
UNIVERSAL SEAL SLEEVE

Ø	CODE	€/Pcs	
200	MEMPAS80200	40,97	01

PER DIAMETRI DA Ø80 A Ø200
FOR DIAMETERS FROM Ø80 TO Ø200



TUTTO CIÒ DI CUI HAI BISOGNO IN UN UNICO KIT!
ALL YOU NEED IN ONE KIT!

KIT DI CONNESSIONE ORIZZONTALE HORIZONTAL CONNECTION KIT

Ø160 — Ø180

Ø	CODE	€/Pcs	
160	KITSCTE160	396,43	01
180	KITSCTE180	559,47	01



• **SISTEMA ISOLATO E CONNESSIONI PERFETTAMENTE SIGILLATE**

- *ISOLATED SYSTEM AND PERFECTLY SEALED CONNECTIONS*

• **SILENZIOSO ASSORBIMENTO DEL RUMORE**

- *SILENT NOISE ABSORPTION*

• **EFFICIENTE: BASSE PERDITE DI CARICO GRAZIE ALLA SUPERFICIE INTERNA LISCIA DEI CONDOTTI**

- *EFFICIENT: LOW PRESSURE LOSSES THANKS TO THE SMOOTH INTERNAL SURFACE OF THE DUCTS*

• **SEMPLICE E VELOCE DA INSTALLARE: MATERIALE LEGGERO, FLESSIBILE, FACILMENTE TAGLIABILE**

- *QUICK AND EASY TO INSTALL: LIGHTWEIGHT, FLEXIBLE MATERIAL, EASILY CUTTABLE.*

• **MATERIALE:**

MATERIAL: EPE

• **LUNGHEZZA CANALIZZAZIONE:**

DUCT LENGTH: 1 E 2M

• **DENSITÀ:**

DENSITY: 30 KG/M²

• **COEFFICIENTE DI SCAMBIO TERMICO:**

*HEAT EXCHANGE COEFFICIENT:
0,041 W/M. K (EN 12667)*

• **RESISTENZA TERMICA:**

THERMAL RESISTANCE: R = 0,39 M² K/W

• **INTERVALLO DI TEMPERATURA:**

*TEMPERATURE RANGE:
MIN. -30°C / MAX +60°C*

• **SPESORE DELLA PARETE:**

WALL THICKNESS: 16MM

• **CLASSE DI FUOCO:**

FIRE CLASS: B1 (EN 4102)

• **TENUTA ALL'ARIA:**

*AIR TIGHTNESS:
D (EN 12237) = ATC 2 (EN16798)*





TERMINALE A TETTO INCLINATO 15°-55°
15°-55° INCLINED ROOF TERMINAL

Ø	CODE	€/Pcs	
150/160	TATI150160	224,55	01
180/200	TATI180200	245,21	01

TERMINALE A TETTO PIANO
FLAT ROOF TERMINAL

Ø	CODE	€/Pcs	
150/160	TATICT150160	190,33	01
180/200	TATICT180200	211,27	01



TERMINALE A TETTO INCLINATO 15°-55°
PER ESPULSIONE

15°-55° SLOPED ROOF TERMINAL FOR EXPULSION

Ø	CODE	€/Pcs	
160/125	TATIES160125	133,50	01
160/150	TATIES160150	137,12	01

TERMINALE A PARETE
WALL TERMINAL

Ø	CODE	€/Pcs	
125	TERMPA125	72,00	01
160	TERMPA160	81,00	01
180	TERMPA180	108,00	01
200	TERMPA200	126,00	01

Per adduzione e estrazione di aria
In PP nero anti UV
Evita il gocciolamento lungo parete

In black anti-UV PP
For air supply and extraction
Prevents dripping along the wall



TERMINALI ASPIRAZIONE A PARETE
BIANCO

WHITE WALL SUCTION TERMINALS

Ø	CODE	€/Pcs	
125	TASP125B	221,04	01
160	TASP160B	227,90	01
180	TASP180B	234,43	01

TERMINALI ASPIRAZIONE A PARETE NERO
BLACK WALL SUCTION TERMINALS

BLACK WALL SUCTION TERMINALS

Ø	CODE	€/Pcs	
125	TASP125N	200,94	01
160	TASP160N	203,58	01
180	TASP180N	207,64	01

Il terminale a tetto coibentato è sviluppato per sistemi di ventilazione a recupero di calore.

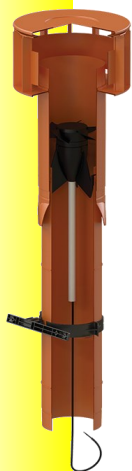
È disponibili in quattro kit d'installazione.

- PER TETTI INCLINATI CON PENDENZA REGOLABILE DA 15° A 35°
SOLUZIONE INTEGRATA 3-IN-1: TERMINALE, TEGOLA E RIDUZIONE
- PROGETTATO PER ADATTARSI A AL TUBO IN EPE Ø160 E Ø200
(ADATTATORI PER CONNETTERSI A Ø150 E Ø180)
- UNIVERSALE PER I PIÙ COMUNI SISTEMI DI VENTILAZIONE
- IL DESIGN INTELLIGENTE IMPEDISCE L'INGRESSO DI NEVE E PIOGGIA NELLA CONDUTTURAZIONE


The insulated roof terminal is developed for heat recovery ventilation systems.

It is available in four installation kits.


- FOR SLOPED ROOFS WITH ADJUSTABLE SLOPE FROM 15° TO 35°
- 3-IN-1 INTEGRATED SOLUTION: TERMINAL, TILE AND REDUCTION
- DESIGNED TO FIT EPE PIPE Ø160 AND Ø200 (ADAPTERS TO CONNECT TO Ø150 AND Ø180)
- UNIVERSAL FOR THE MOST COMMON VENTILATION SYSTEMS
- INTELLIGENT DESIGN PREVENTS SNOW AND RAIN FROM ENTERING THE PIPELINE



TERMINALE A TETTO CON
ESTRATTORE L=750
ROOF TERMINAL WITH EXTRACTOR L=750

Ø	CODE	€/Pcs	
125	TATES12575	50,46	01

VENTILATORE PER TERMINALE A
TETTO CON ESTRATTORE
ROOF TERMINAL FAN WITH EXTRACTOR


Ø	CODE	€/Pcs	
125	VENT125	235,54	01



TEGOLA PER CAMINI A TETTO PIANO
TILE FOR ROOF TERMINAL


Ø	CODE	€/Pcs	
125/150	TEGTPN	26,20	01

TEGOLA PER CAMINI A TETTO
INCLINATO 15°-55°
TILE FOR CHIMNEYS ON ROOF INCLINED 15°-55°


Ø	CODE	€/Pcs	
125/150	TEGNNUB1555	72,71	01



ROSONE A TENUTA
PER TETTI INCLINATI
SEALED COVERS
FOR SLOPED ROOFS

Ø	CODE	€/Pcs	
100/131	ROSTI100131	16,48	01
150/186	ROSTI150186	24,68	01
180/250	ROSTI180250	117,98	01

ROSONE A TENUTA
SEALED COVERS

Ø	CODE	€/Pcs	
60/80	ROSAT6080	12,53	01
100/131	ROSAT100131	12,61	01
150/186	ROSAT150186	63,67	01
180/250	ROSAT180250	93,51	01



- IL TERMINALE A TETTO PER SISTEMI IBRIDI È UNA COMBINAZIONE UNICA DI VENTILAZIONE NATURALE E MECCANICA, VENTILAZIONE NATURALE PERMANENTE E VENTILAZIONE MECCANICA SE NECESSARIA. APPOSITAMENTE PROGETTATA PER BAGNI, CUCINE, SERVIZI IGENICI O COMunque AMBIENTI CONFINATI, IL TERMINALE INTEGRA UN VENTILATORE/ESTRATTOTORE CON PORTATA >75 m³/H
- REALIZZATO IN PP RESISTENTE A I RAGGI UV INTERAMENTE RICICLABILE
- TERMINALE AD ALTO TIRAGGIO
- EVACUATORI DI CONDENSA SOPRA TETTO INTEGRATI

- THE ROOF TERMINAL FOR HYBRID SYSTEMS IS A UNIQUE COMBINATION OF NATURAL AND MECHANICAL VENTILATION, PERMANENT NATURAL VENTILATION AND MECHANICAL VENTILATION IF NECESSARY. SPECIALLY DESIGNED FOR BATHROOMS, KITCHENS, TOILETS OR ANY OTHER CONFINED SPACES, THE TERMINAL INTEGRATES A FAN/EXTRACTOR WITH A FLOW RATE >75 m³/H
- MADE OF UV RESISTANT PP, FULLY RECYCLABLE
- HIGH DRAFT TERMINAL
- INTEGRATED ROOFTOP CONDENSATION VENTILATORS

VENTILAZIONE A RECUPERO DI CALORE PER AMBIENTI SINGOLI

SINGLE ROOM ENERGY RECOVER VENTILATOR

	CODE	€/Pcs	
EASY Modello Base <i>Basic Model</i>	VMCP01	390,24	01
EASY con Wi-Fi e funzionamento in coppia <i>with Wi-Fi and paired operation</i>	VMCP02	455,04	01
PRO con sensore CO ₂ e funzionamento in coppia <i>with CO₂ sensor and paired operation</i>	VMCP03	649,37	01
PRO con sensore Umidità e funzionamento in coppia <i>with humidity sensor and paired operation</i>	VMCP04	649,37	01



ESSA PERMETTE IL RECUPERO DI CALORE DI STANZE SINGOLE PER LA VENTILAZIONE DI AMBIENTI FINO A 30m². GRAZIE AD UN VENTILATORE A FLUSSO INVERTIBILE CHE PERMETTE DI ALTERNARE IMMISSIONE DI ARIA ESTERNA NELLA STANZA ED ESTRAZIONE DI ARIA VIZIATA. È DOTATO DI UNO SCAMBIATORE DI CALORE CERAMICO AD ALTA EFFICIENZA PER IL RECUPERO DELL'ENERGIA TERMICA CONTENUTA NELL'ARIA, SIA IN CLIMATIZZAZIONE INVERNALE CHE ESTIVA. INSTALLANDO UNA COPPIA DI VENTILATORI RENDE POSSIBILE IL FUNZIONAMENTO SINCRONIZZATO PER IL MANTENIMENTO IDEALE DEL LIVELLO DI PRESSIONE INTERNA ALLA STANZA E OTTIMIZZANDO LA VENTILAZIONE.

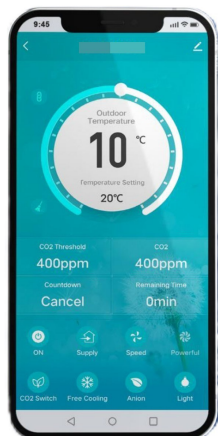
IT ALLOWS HEAT RECOVERY FROM SINGLE ROOMS FOR VENTILATION OF SPACES UP TO 30m². THANKS TO A REVERSIBLE FLOW FAN THAT ALLOWS ALTERNATING THE INTRODUCTION OF EXTERNAL AIR INTO THE ROOM AND THE EXTRACTION OF STALE AIR. IT IS EQUIPPED WITH A HIGH-EFFICIENCY CERAMIC HEAT EXCHANGER FOR THE RECOVERY OF THERMAL ENERGY CONTAINED IN THE AIR, BOTH IN WINTER AND SUMMER AIR CONDITIONING. INSTALLING A PAIR OF FANS MAKES SYNCHRONIZED OPERATION POSSIBLE TO MAINTAIN THE IDEAL LEVEL OF PRESSURE INSIDE THE ROOM AND OPTIMIZE VENTILATION.

CARATTERISTICHE:

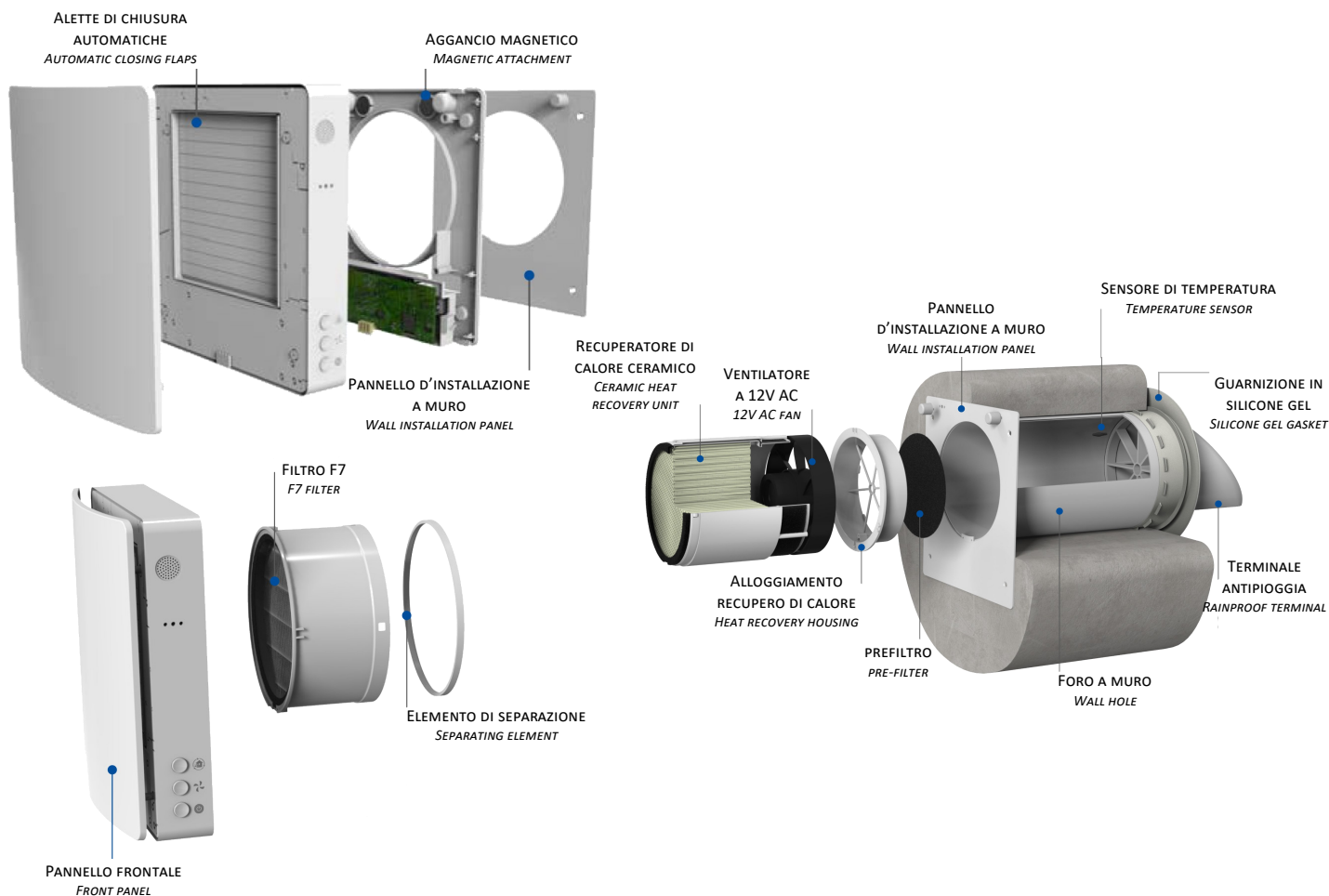
- » ELEGANTE PANNELLO FRONTALE
- » VENTILATORE A FLUSSO INVERTIBILE A BASSO CONSUMO
- » BASSO IMPATTO ACUSTICO
- » CONTROLLO DELLA QUALITÀ DELL'ARIA INTERNA
- » AIUTA A PREVENIRE LA FORMAZIONE DI MUFFE
- » FILTRO F7 (NO PER EASY)
- » ALETTE DI CHIUSURA AUTOMATICHE PER IMPEDIRE IL RITORNO D'ARIA
- » TUTTA L'INSTALLAZIONE PUÒ ESSERE PORTATA A TERMITE DALL'INTERNO
- » PIÙ DISPOSITIVI LAVORANO SINCRONIZZATI VIA WIRELESS
- » CONTROLLO WIRELESS CON APP ANDROID/IOS

FEATURES:

- » ELEGANT FRONT PANEL
- » LOW CONSUMPTION REVERSIBLE FLOW FAN
- » LOW NOISE IMPACT
- » INDOOR AIR QUALITY CONTROL
- » HELP TO PREVENT THE FORMATION OF MOLD
- » F7 FILTER (NO FOR EASY)
- » ALETTE DI CHIUSURA AUTOMATICHE PER IMPEDIRE IL RITORNO D'ARIA
- » AUTOMATIC CLOSING FLAPS TO PREVENT AIR RETURN
- » MULTIPLE DEVICES WORK IN SYNC VIA WIRELESS
- » WIRELESS CONTROL WITH ANDROID/IOS APP



TIMER	PROGRAMMAZIONE SETTIMANALE PROGRAMMING WEEKLY	AVVISO DI CAMBIO/ PULIZIA FILTRO FILTER CHANGE/ CLEANIGN NOTICE	MEMORIZZAZIONE ABITUDINI UTENTE USER HABITS STORAGE	POSSIBILITÀ DI ASSOCIAZIONE MULTIPLA MULTIPLE ASSOCIATION POSSIBILITIES	DISPOSITIVI RAGGRUPPABILI IN GRUPPI/STANZE DEVICES THAT CAN BE GROUPED INTO GROUPS/ROOMS	DISPOSITIVI SINCR VIA WIRELESS WIRELESS SYNC DEVICES
SMART CONTROL SULLA BASE DEL METEO LOCALE SMART CONTROL BASED ON LOCAL WEATHER	COMPATIBILE CON ALEXA E GOOGLE ASSISTANT COMPATIBLE WITH ALEXA AND GOOGLE ASSISTANT	FUNZIONAMENTO AUTOMATICO IN MODALITÀ ENTRATA AUTOMATIC OPERATION IN ENTRY MODE	VENTILATORE CON FUNZIONE BOOST FAN WITH BOOST FUNCTION	IONIZZATORE D'ARIA OPZIONALE OPTIONAL AIR IONIZER	CONTROLLO DELLA CO ₂ OPZIONALE OPTIONAL CO ₂ CONTROL	CONTROLLO DELL'UMIDITÀ OPZIONALE OPTIONAL HUMIDITY CONTROL



	Mod. EASY VMCP01 VMCP02	Mod. PRO VMCP03 VMCP04
TENSIONE/FREQUENZA VOLTAGE/FREQUENCY	100V—250 AC / 50-60Hz	100V—250 AC / 50-60Hz
PORTATA D'ARIA ORARIA (m ³ /h) (VELOCITÀ VENTOLA BASSA / MEDIA / ALTA) HOURLY AIR FLOW RATE (m ³ /h) (FAN SPEED LOW / MEDIUM / HIGH)	26 / 55 / 64	20 / 40 / 50
POTENZA ASSORBITA (BASSA / MEDIA / ALTA) (W) POWER ABSORBED (LOW / MEDIUM / HIGH) (W)	5.9 / 8.8 / 11.3	6 / 7 / 7.8
INTENSITÀ DI CORRENTE (A) CURRENT INTENSITY (A)	0.06	0.06
RUMORE (dBA) NOISE	≤ 31.9	≤ 31
NUMERO MASSIMO DI GIRI AL MINUTO MAXIMUM NUMBER OF RPM	2000	2200
EFFICIENZA RECUPERO DEL CALORE (%) HEAT RECOVERY EFFICIENCY (%)	≤ 97	≤ 97
LIVELLO DI PROTEZIONE INGRESSO INPUT PROTECTION LEVEL	IP22	IPX4
SEC CLASS	A	A
DIAMETRO DEL CONDOTTO (mm) CONDUIT DIAMETER (mm)	158	158
DIMENSIONI (mm) DIMENSIONS (mm)	205 x 205 x 419	239.6 x 258 x 499.7
LUNGHEZZA DEL TUBO A MURO LENGTH OF WALL PIPE	230-420mm	280-470mm
PESO (Kg) WEIGHT (Kg)	3.4	4.2
FUNZIONI WIFI WIFI FUNCTIONS	SOLO PER MODELLO VMCP02	DI SERIE
SENSORE CO ² CO ² SENSOR	NON PRESENTE	SOLO PER MODELLI VMCP03 E VMCP04
FILTRO F7 F7 FILTER	SOLO PER MODELLO VMCP02	DI SERIE

